
Parallels Software International, Inc.

Parallels Compressor

User Guide

Workstation



(c) 2005-2006

Contents

Preface	4
About This Guide	4
Who Should Read This Guide	4
Document Conventions.....	5
Introduction	6
About Parallels Compressor Workstation.....	6
Editions of Parallels Compressor.....	6
Benefits of Using Parallels Compressor	7
Terms of Use.....	8
Installing Parallels Compressor	9
System Requirements	9
Supported Virtual Platforms.....	9
Requirements for Host (Primary) Operating System.....	10
Requirements for Guest Operating Systems.....	11
Downloading the Parallels Compressor.....	11
Installing Parallels Compressor in Host OS.....	12
Installing in Host Windows OS	12
Installing in Host Linux OS.....	13
Installing Parallels Compressor in Guest OS.....	15
Activating Parallels Compressor.....	16
Getting an Activation Key	17
Activating in Host Windows OS	18
Activating in Host Linux OS	19
Activating in Guest Windows OS.....	20
Updating Parallels Compressor Workstation.....	22
Uninstalling Parallels Compressor in Windows	22
Uninstalling Parallels Compressor in Linux	23
How to Run Parallels Compressor	24
When Installed in Host OS	24
Connecting Parallels Compressor ISO Image File	25
When Installed in Guest OS.....	27
Command Line Keys for Parallels Compressor	28

Parallels Compressor Wizard.....29
Compression in Automatic Mode35

Options of Compressing 39

Limitations of Virtual Machine Compression40
Running Modes.....41
Express and Advanced Modes42
Compression Levels.....43
Further Reducing the Disk Size44

Index 45

CHAPTER 1

Preface

In This Chapter

About This Guide.....	4
Who Should Read This Guide.....	4
Document Conventions.....	5

About This Guide

Parallels Compressor Workstation User Guide, contains all the information necessary for installing and using Parallels Compressor Workstation.


Who Should Read This Guide

Anyone who uses virtual machines for software development, quality assurance or other purposes.

This Guide assumes the readers have basic understanding of the concepts of virtual machine usage and possesses basic computer skills.

Document Conventions

Before you start reading this guide, it is important to understand the guide's conventions.

Example	Description
To release mouse press <code>Ctrl+Alt</code> .	Hot key combinations in monospace font
To continue click Next .	Names of buttons in bold
No disk is selected!	Program messages in monospace font
Select the Use ISO image option.	names of options in bold
You can install program using an <code>.iso</code> image file	File's extensions in monospace font
Note. Do not run Parallels Compressor in the host (primary) operating system.	Additional information
Warning. Please backup your virtual machine.	Information essential for avoiding data loss
<code>./install.sh</code>	Console commands in Linux
	Reference to other topic or resource

Abbreviations used in text

"OS" - to make text more readable and headers a bit shorter we will use "OS" instead of operating system in some instances.

CHAPTER 2

Introduction

This Chapter describes the product and terms of its use.

In This Chapter

About Parallels Compressor Workstation	6
Editions of Parallels Compressor	6
Benefits of Using Parallels Compressor	7
Terms of Use	8

About Parallels Compressor Workstation

Parallels™ Compressor Server is a new easy-to-use Parallels tool which will help you keep your virtual machines efficient for many purposes.

Parallels Compressor allows users to:

- effectively clean up disk space in a virtual machine
- significantly reduce the size of virtual hard disks
- efficiently use the real hard disk resource
- more easily share smaller virtual disks by burning them to CD/DVDs or moving them over a network.

Parallels Compressor can be used on virtual machines from different vendors, such as Parallels, VMware, and Microsoft.

Editions of Parallels Compressor

Parallels Compressor is available in two editions:

- **Parallels™ Compressor Server.** This powerful tool for compressing virtual machines, runs on both server and workstation versions of supported host and guest operating systems. Runs on all virtual platforms, including server editions.
- **Parallels™ Compressor Workstation.** This edition of the tool is intended only for workstation versions of host and guest operating systems and runs only on workstation editions of virtual platforms.

Benefits of Using Parallels Compressor

Reducing the size of virtual machine is a very important problem for virtual machines users.

The introduction of expanding format for virtual disk was the first step in this direction. An expanding disk is very size efficient at the beginning of a virtual machine life cycle and becomes less and less efficient as time goes on, because each time writing to disk is requested, the system allocates new space, and therefore disk size increases. Deleting files does not reduce the size of a virtual disk image file in the host (primary) operating system. Eventually, an expanding virtual disk could grow enormously causing a number of inconveniences.

All virtual machine vendors know that such problems exist and offer built-in disk compacting tools to solve them. But as a rule, these tools are only effective if preliminary cleaning of temporary and unused files, and virtual disk defragmenting have been performed.

Parallels Compressor is designed to perform the efficient compression of virtual machine, including compacting of virtual disks that can significantly increase the ratio of useful data in your virtual machine. The procedure consists of two steps:

- a preparatory step performed in the guest operating system (deleting of temporary and unnecessary files, cleaning up of unused disk space);
- a shrinking/compacting step (reducing of the size of virtual disk) performed in the host (primary) operating system. This operation is performed for VMware and Parallels virtual machines; as for Microsoft Virtual PCs, Parallels Compressor only recommends to use Microsoft Virtual Disk Wizard to compact virtual disk.

Parallels Compressor can be installed in the host operating system and directly in your virtual machine; it can be run in either automatic mode or manually.

Let us consider several typical scenarios where Parallels Compressor proves to be an indispensable tool for virtual machines compressing.

Installation in virtual machine

You use the same virtual machine with expanding disk for a long period of time, for example, for testing successive builds of a new software product. Software installations and uninstallations performed multiple times, result in very large virtual disk.

Run Parallels Compressor periodically in such a virtual machine to delete unnecessary files, clean up unused space and reduce the size of disk by the size of unused space. Each time you run Parallels Compressor you can customize the process of virtual machine compression: choose a desired level of compression and even particular tasks suggested for that level. Or you can run Parallels Compressor in Express compression mode, where the default options will be used.

Installation on host computer

You have several virtual machines running on your workstation. The more virtual machines are in use, the more they grow in size. With Parallels Compressor installed in the host (primary) operating system, you can use the same ISO image for all virtual machines to maintain their sizes in reasonable ranges. Note that the Compressor itself doesn't require any space inside those machines.

Terms of Use

The Parallels Compressor Workstation is a product of Parallels Software International, Inc.

The fully-functional version of Parallels Compressor Workstation is available for download from the company web-site at the Parallels Download Center <http://www.parallels.com/en/download>. To use the Parallels Compressor you need to activate it with an activation key. You can get an activation key for Parallels Compressor in one of the following ways:

- pay online at the Parallels Buy Online <http://www.parallels.com/en/buyonline> and receive a permanent activation key by email.
- register at the Parallels Download Center <http://www.parallels.com/en/download> and get a temporary activation key for the trial period. To continue using Parallels Compressor beyond your trial period you must buy a permanent activation key.

The product is licensed per computer. You can use Parallels Compressor Workstation on all virtual machines running on your computer.

CHAPTER 3

Installing Parallels Compressor

This Chapter contains all the information you need to install, activate, update and uninstall the Parallels Compressor.

In This Chapter

System Requirements.....	9
Downloading the Parallels Compressor.....	11
Installing Parallels Compressor in Host OS.....	12
Installing Parallels Compressor in Guest OS.....	15
Activating Parallels Compressor.....	16
Updating Parallels Compressor Workstation.....	22
Uninstalling Parallels Compressor in Windows.....	22
Uninstalling Parallels Compressor in Linux.....	23

System Requirements

Parallels Compressor Workstation does not impose any requirements for computer hardware.

Although Parallels Compressor is designed to operate inside a virtual machine, it can be installed in both guest or host operating system. Further we will refer to the operating system installed on a real computer as to host or host (primary) operating system.

Software installed on your computer should meet certain requirements for running Parallels Compressor. Before you install the product, please check that:

- your virtual machine is of supported type,
- operating system installed on your computer meets the requirements for host (primary) operating systems,
- operating system installed in virtual machine meets the requirements for guest operating system.

Note. Please check that your virtual machine supports particular host and guest operating systems.

Supported Virtual Platforms

Parallels Compressor can be run in virtual machines of the following virtual platforms:

- Parallels Workstation 2.1
- VMware Workstation
- Microsoft Virtual PC

Requirements for Host (Primary) Operating System

To install Parallels Compressor in your virtual machine you should have one of the host (primary) operating systems installed on your computer from the list below.

Windows Host Operating Systems (32-Bit)

- Windows XP Professional SP2
- Windows XP Home Edition SP2
- Windows 2000 Professional SP4

Windows Host Operating Systems (64-Bit)

- Windows XP Professional x64 Edition SP1

Linux Host Operating Systems (32-bit):

- Red Hat Enterprise Linux WS4
- Red Hat Enterprise Linux WS3
- Red Hat Linux 9
- Red Hat Linux 8
- Red Hat Linux 7.3
- Debian Linux 3.1
- Fedora Core Linux 4
- Fedora Core Linux 3
- SUSE Linux 10
- SUSE Linux 9.3
- SUSE Linux 9.2
- SUSE Linux 9.1
- SUSE Linux 9.0
- Mandriva Linux 10.1
- Mandriva Linux 10
- Mandriva Linux 9.2

Linux Host Operating Systems (64-Bit)

- SUSE Linux 10
- SUSE Linux Pro 9.3
- SUSE Linux Pro 9.2
- SUSE Linux Pro 9.1

Requirements for Guest Operating Systems

The current version of Parallels Compressor uses specifics of Microsoft Windows operating systems. To run Parallels Compressor in your virtual machine you should have one of the following guest operating systems:

Windows Guest Operating Systems (32-Bit)

- Windows XP Professional Edition SP2
- Windows XP Home Edition SP2
- Windows 2000 Professional SP4

Windows Guest Operating Systems (64-Bit)

- Windows XP Professional x64 Edition SP1

Downloading the Parallels Compressor

Parallels Compressor can be installed either in host (primary) or in guest operating systems. Several packages are available for downloading at the Parallels Download Center <http://www.parallels.com/en/download/>. You have to download the correct package to fit your needs.

For installation in guest operating system

- `Parallels-Cps-Wst-XXXX-Win.exe` for installation in virtual machine regardless of what host (primary) operating system you have. Check that your guest operating system is supported.

For installation in host (primary) operating system

- `Parallels-Cps-Wst-XXXX-Win.exe` for all supported Microsoft Windows host (primary) operating systems;
- the following files are for Linux operating systems:
 - `Parallels-cps-wst-XXXX-lin.i386.rpm`
 - `Parallels-cps-wst-XXXX-lin.tgz`
 - `Parallels-cps-wst-XXXX-lin.deb`.

Choose one of packages which is supported by your Linux host (primary) operating system.

All these installation files for Parallels Compressor are available for downloading from the Parallels web-site. Before you download the selected file please read Terms of Use (see page 8).

Installing Parallels Compressor in Host OS

To install Parallels Compressor in the host (primary) operating system choose an installation package from the list of available for downloading (see page 11), depending on what host (primary) operating system is installed on your computer.

Installing in Host Windows OS

Note. You must have power user or administrator rights to install the program in the Windows operating systems.

To install Parallels Compressor:

- 1 Run the `Parallels-Cps-Wst-XXXX-Win.exe` file.
- 2 Installation wizard starts and displays the **Welcome** dialog box. Click **Next** to continue.
- 3 **The License agreement.** Read the license agreement. Click **I accept the agreement** and then **Next** or click the **Cancel** button to exit the wizard.
- 4 **Product activation.** Input the customer information: your name and the name of company you work for (these fields are optional).

You can choose one of the following options:

- input your activation key. Click **Next**;
 - buy a permanent activation key. The **Buy** button redirects you to the Parallels Buy Online Page <http://www.parallels.com/en/buyonline>;
 - get a temporary activation key by clicking the **Register at site** button which redirects to the Parallels Download Center <http://www.parallels.com/en/download>
 - skip the activation by clicking the **Activate later** button.
- 5 Select where to place the program shortcuts:
 - on Desktop
 - on Start menu
 - on Quick Launch menu

Click **Next**.

- 6 **Location for Parallels Compressor.** Select location for the program. The default folder is:
`C:\Program Files\Parallels\Parallels Compressor.`
Click **Change** to specify location different from the default. Click **Next**.
- 7 The wizard is ready to install the program. Click **Install**.
- 8 The installation is completed. Select the **Open folder with new installation** check box to view Parallels Compressor files. Click **Finish**.

In the process of installation, the following files are placed to the specified Parallels Compressor folder:

- `ParallelsCompressor.iso`
- `ParallelsCompressor.chm`
- `Parallels Compressor User Guide.pdf`
- `CpsLicense.exe`
- `Readme.txt`
- `EULA.txt`

Known issues

When you install Parallels Compressor in Windows XP operating system, the following error may occur: `Error Code: -5006 : 0x80004005`.

- 1 Close all applications and exit all other setups.
- 2 Launch Parallels Compressor setup once again.

If the error still appears, try the following steps:

- 1 From the Start menu, choose Control Panel -->Add / Remove Programs.
- 2 On the left panel select Add New Programs.
- 3 Click the CD or Floppy button.
- 4 The Install Program from Floppy or CD dialog box appears, click Next.
- 5 System searches your Floppy and CD drives, then displays the Run Installation Program dialog box.
- 6 Click Browse and locate the Parallels Compressor installation file.
- 7 Click Next and the installation will begin.

Most probably, the program will be installed successfully after these steps.

Installing in Host Linux OS

Depending on what file types your Linux -type system supports, download one of the following packages: RPM, DEB or TAR archive.

Note. To install Parallels Compressor on a Linux computer, you need `root` privileges.

To install Parallels Compressor in host (primary) operating system follow the steps below:

- 1 Launch the Terminal program.

- 2 Run the

```
su
```

command to gain `root` privileges. Enter the password to the `root` account when prompted.

3 If RPM format is supported in your system:

- Locate the file `Parallels-cps-wst-XXXX-lin.i386.rpm`.
- To start installation, enter the following command:

```
rpm -i Parallels-cps-1.0.XX-lin.i386.rpm
```

Go to Step 7.

4 If DEB format is supported in your system:

- Locate the file `Parallels-cps-wst-XXXX-lin.deb`.
- To start installation, enter the following command:

```
dpkg -i Parallels-cps-1.0.XX-lin.rpm
```

Go to Step 7.

5 If both RPM and DEB formats are not supported in your system:

- Locate the file `Parallels-cps-wst-XXXX-lin.tgz` and extract it into any existing directory:

```
tar -xzf Parallels-cps-1.0.XX-lin.tgz
```

- go to the directory where the files were unpacked

```
cd parallels-compressor
```

6 To install Parallels Compressor, type the following command:

```
./install.sh
```

7 To activate (register) Parallels Compressor enter the following command:

```
cpsactivate <activation key>
```

where <activation key> stands for the 25-symbol key itself.

8 When the installation is completed enter the following command:

```
exit
```

to quit the root account.

In the process of installation, the following files are placed to the Parallels Compressor folder:

- `parallels_compressor.iso`
- `parallels_compressor_user_guide.pdf`
- `README`
- `LICENSE`
- `cpsactivate`

Installing Parallels Compressor in Guest OS

To install Parallels Compressor in your virtual machine:

- check that Parallels Compressor supports your guest operating system (see page 11),
- download the `Parallels-Cps-Wst-XXXX-Win.exe` file.

Before you start the installation, copy the Parallels installation file (`Parallels-Cps-1.0.XX-Win.exe`) inside your virtual machine by means available in your virtual machine: via network connection if configured, by drag-and-drop (VMware), using ISO image of this file (all virtual platforms) and so forth.

Note. You must have power user or administrator rights to install the program in the Windows operating systems.

To install Parallels Compressor in guest operating system:

- 1 Run the `Parallels-Cps-Wst-XXXX-Win.exe` file.
- 2 Installation wizard starts and displays the **Welcome** dialog box. Click **Next** to continue.
- 3 **The License agreement.** Read the license agreement. Click **I accept the agreement** and then **Next** or click the **Cancel** button to exit the wizard.
- 4 **Product activation.** Input the customer information: your name and the name of company you work for (these fields are optional).

You can choose one of the following options:

- input your activation key. Click **Next**;
 - buy a permanent activation key. The **Buy** button redirects you to the Parallels Buy Online Page <http://www.parallels.com/en/buyonline>;
 - get a temporary activation key by clicking the **Register at site** button which redirects to the Parallels Download Center <http://www.parallels.com/en/download>
 - skip the activation by clicking the **Activate later** button.
- 5 Select where to place the program shortcuts:
 - on Desktop
 - on Start menu
 - on Quick Launch menu

Click **Next**.

- 6 **Location for Parallels Compressor.** Select location for the program. The default folder is:
`C:\Program Files\Parallels\Parallels Compressor.`
Click **Change** to specify location different from the default. Click **Next**.
- 7 The wizard is ready to install the program. Click **Install**.

- 8 The installation is completed. Select the **Open folder with new installation** check box to view **Parallels Compressor** files. Click **Finish**.

In the process of installation, the following files are placed to the specified Parallels Compressor folder:

- `ParallelsCompressor.exe`
- `ParallelsCompressor.chm`
- `Parallels Compressor User Guide.pdf`
- `Readme.txt`
- `EULA.txt`

Known issues

When you install Parallels Compressor in Windows XP operating system, the following error may occur: `Error Code: -5006 : 0x80004005`.

- 1 Close all applications and exit all other setups.
- 2 Launch Parallels Compressor setup once again.

If the error still appears, try the following steps:

- 1 From the **Start** menu, choose **Control Panel -->Add / Remove Programs**.
- 2 On the left panel select **Add New Programs**.
- 3 Click the **CD or Floppy** button.
- 4 The **Install Program from Floppy or CD** dialog box appears, click **Next**.
- 5 System searches your Floppy and CD drives, then displays the **Run Installation Program** dialog box.
- 6 Click **Browse** and locate the Parallels Compressor installation file.
- 7 Click **Next** and the installation will begin.

Most probably, the program will be installed successfully after these steps.

Activating Parallels Compressor

To run Parallels Compressor you should activate it with an activation key, please read the **Terms of Use** (see page 8) and **Getting an Activation Key** topics.

The procedure of activation is slightly different for guest and host operating systems.

Note. The program should be activated in the same operating system where it was installed.

Getting an Activation Key

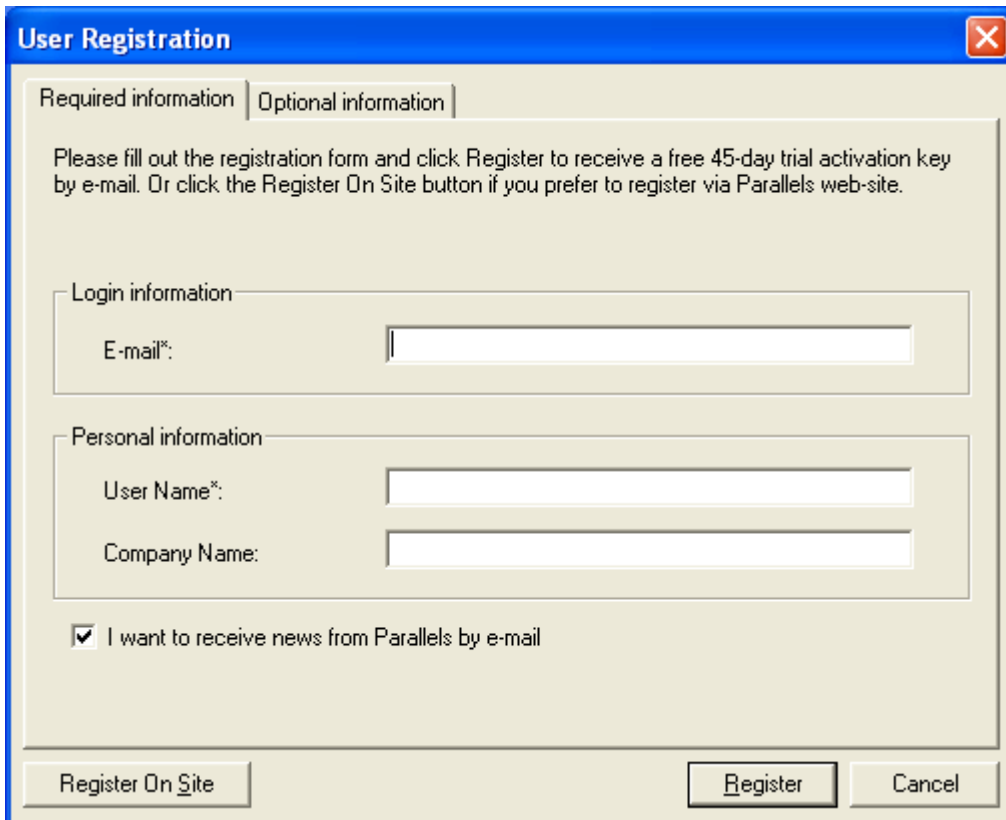
You may get a free temporary activation key valid only for a trial period or you can buy a permanent activation key.

To get a permanent activation key buy it at the Parallels web-site <http://www.parallels.com/en/buyonline>.

To get a temporary activation key valid only for a trial period:

- register at the Parallels web-site. <http://www.parallels.com/en/download>
- launch Parallels Compressor, click the **Get activation key** button on the Parallels Compressor dialog box.

Fill out the standard User Registration form.



The image shows a 'User Registration' dialog box with a blue title bar and a close button (X) in the top right corner. The dialog is divided into two tabs: 'Required information' (selected) and 'Optional information'. Below the tabs, there is a paragraph of text: 'Please fill out the registration form and click Register to receive a free 45-day trial activation key by e-mail. Or click the Register On Site button if you prefer to register via Parallels web-site.' The form contains two main sections: 'Login information' with an 'E-mail*' field, and 'Personal information' with 'User Name*' and 'Company Name' fields. At the bottom, there is a checked checkbox labeled 'I want to receive news from Parallels by e-mail'. Three buttons are located at the bottom: 'Register On Site', 'Register', and 'Cancel'.

User Registration

Required information | Optional information

Please fill out the registration form and click Register to receive a free 45-day trial activation key by e-mail. Or click the Register On Site button if you prefer to register via Parallels web-site.

Login information

E-mail*:

Personal information

User Name*:

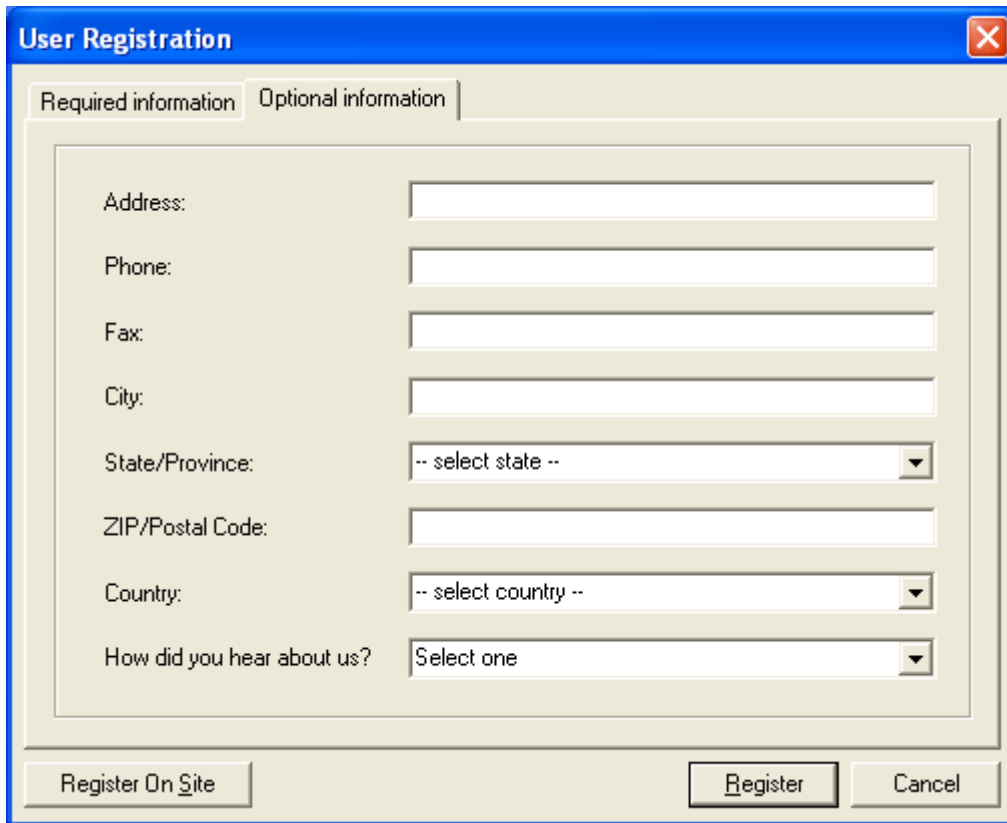
Company Name:

I want to receive news from Parallels by e-mail

Register On Site Register Cancel

On the User Registration form, specify your e-mail and your name. The fields Name and Company Name are optional. Specify if you want to receive news from Parallels by e-mail.

Fill out the Optional Information tab form too.

The image shows a 'User Registration' dialog box with a blue title bar and a close button (X) in the top right corner. It has two tabs: 'Required information' (selected) and 'Optional information'. The 'Required information' tab contains several input fields: 'Address:', 'Phone:', 'Fax:', 'City:', 'State/Province:' (a dropdown menu with '-- select state --'), 'ZIP/Postal Code:', 'Country:' (a dropdown menu with '-- select country --'), and 'How did you hear about us?' (a dropdown menu with 'Select one'). At the bottom of the dialog, there are three buttons: 'Register On Site', 'Register', and 'Cancel'.

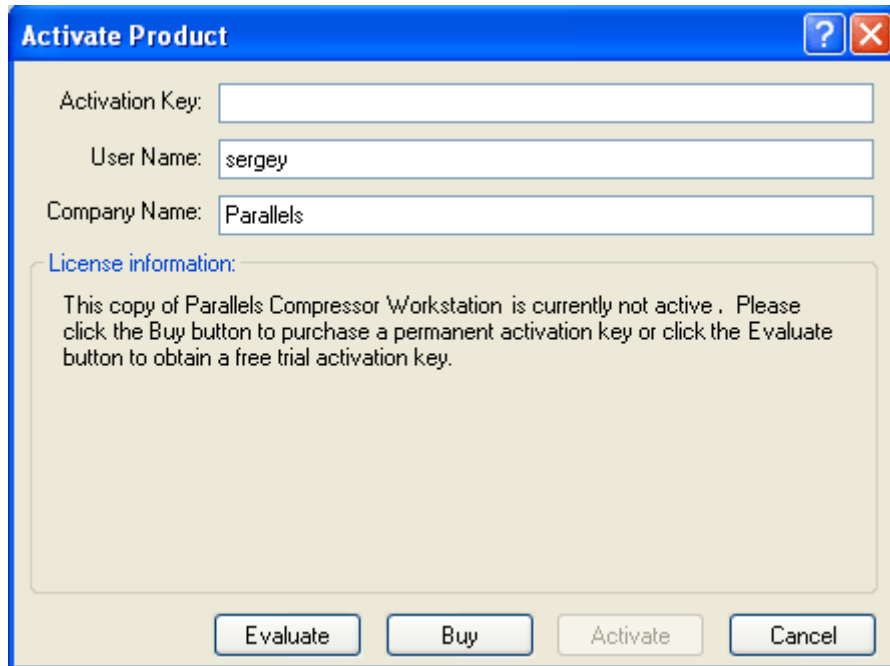
You'll receive a temporary activation key for a trial period.

Activating in Host Windows OS

If you are going to activate Parallels Compressor in the host Windows operating system with a temporary or permanent activation key follow the steps below:

- 1 Disconnect Parallels Compressor ISO file from all running virtual machines if it was connected.
- 2 You can start the activation in one of the following steps:
 - Select Start --> Programs--> Parallels--> Parallels Compressor--> Activate Parallels Compressor.
 - Click the CpsLicense.exe file (activator utility), located in the Parallels Compressor installation folder (by default, C:\Program Files\Parallels\Parallels Compressor).

- 3 The Activate Product dialog box appears.



- 4 On the Activate Product dialog box fill in the following fields:
- the Activation key field, enter the activation key that you received by email. Once this field is not blank, the Activate button becomes active.
 - the User Name and Company Name fields. These fields are optional, automatically filled by data taken from Windows system settings.
- 5 Click the Activate button. If you have entered a valid activation key, the following confirmation message will be displayed: "Parallels Compressor has been activated successfully. Thank you!"

After that your copy of the Parallels Compressor becomes active and you may use all of its features and capabilities.

The License information box describes your current activation status: inactive, active trial, expired trial period, active permanent, expired permanent. If you have an active copy, trial or permanent, all license-related information is displayed here.

Activating in Host Linux OS

If you skipped the product activation during the installation you'll be required to enter an activation key before you'll be able to run the program.

Note. To install Parallels Compressor on a Linux computer, you need root privileges.

To activate Parallels Compressor in Linux do the following:

- 1 Disconnect Parallels Compressor ISO image from all running virtual machines.
- 2 Launch the Terminal program.
- 3 Run the

```
su
```

command to gain root privileges. Enter the password to the root account when prompted.

- 4 For all operating systems enter the following command:

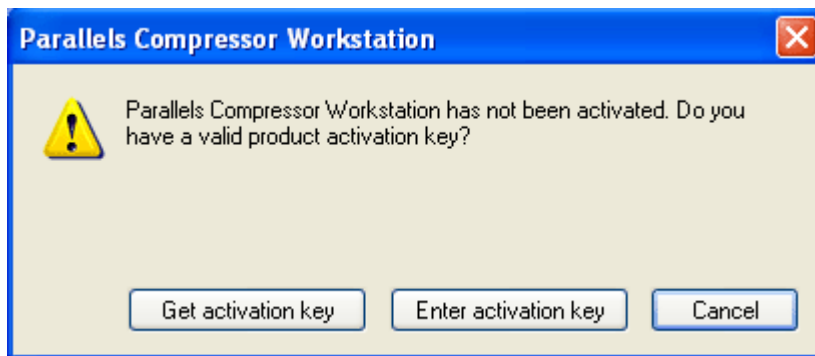
```
/usr/share/parallels-compressor/cpsactivate <activation key>
```

- 5 If the registration is successful, you will get an appropriate message.

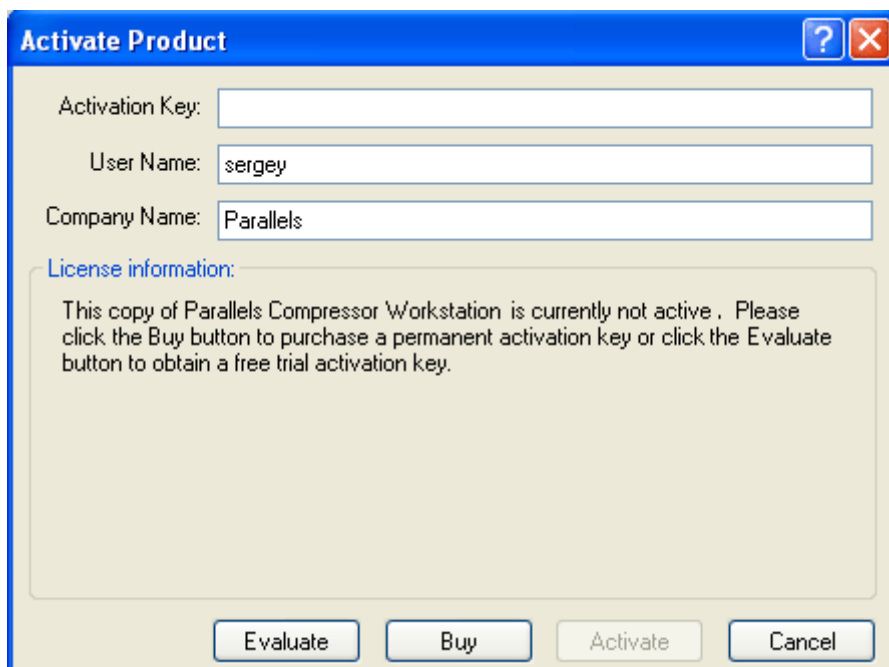
Activating in Guest Windows OS

If you are going to activate Parallels Compressor which was installed in the guest operating system, perform the following operations:

- 1 Click the Enter activation key button on the Parallels Compressor dialog box. The Parallels Compressor dialog box appears.



- 2 The Activate Product dialog box appears.



- 3 On the Activate Product dialog box fill in the following fields:
 - the Activation key field, enter the activation key that you received by email. Once this field is not blank, the Activate button becomes active.

- the **User Name** and **Company Name** fields. These fields are optional, automatically filled by data taken from Windows system settings.
- 4 Click the **Activate** button. If you have entered a valid activation key, the following confirmation message will be displayed: "Parallels Compressor has been activated successfully. Thank you!"

After that, your copy of the Parallels Compressor becomes active and you may use all of its features and capabilities.

The **License information** box describes your current activation status: inactive, active trial, expired trial period, active permanent, expired permanent. If you have an active copy, trial or permanent, all license-related information is displayed here.

Activating Parallels Compressor via the command line

If the program was installed in a virtual machine it also can be activated in the following way:

- 1 Click **Start --> Run** to open command line (cmd program).
- 2 Change directory to **Program files-->Parallels-->Parallels Compressor**.
- 3 Enter the command:

```
ParallelsCompressor /R<activation key>
```

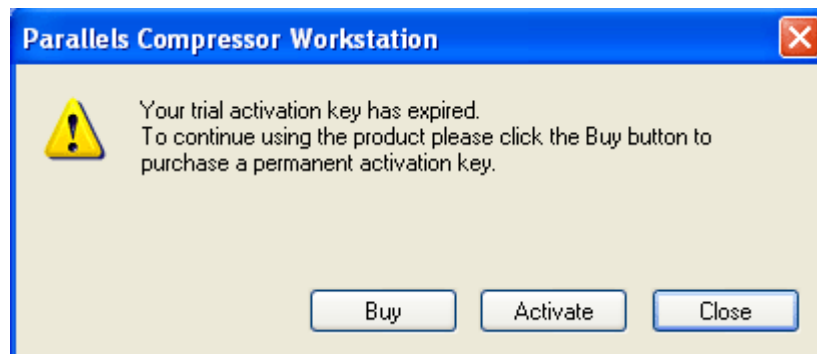
where the <activation key> should be substituted for a 25-symbol activation key itself.

- 4 Parallels Compressor displays the dialog box as one above, and you can enter your activation key and other required information to activate the product.

Activating Parallels Compressor after the trial period

If you entered a temporary activation key to use the product during a trial period, and then get a permanent activation key, you should re-activate your copy of Parallels Compressor with a permanent key.

You can re-activate it any time by clicking the **Activate** button on the trial period information panel which appears each time you run the program when your trial period is going to its end.



Once the trial period has expired, you can re-activate the program with a permanent activation key in the following way:

- 1 Start Parallels Compressor. It displays the same dialog with the **Close** button in place of **Continue**.

Click the **Activate** button.

- 2 On the next dialog box enter the activation key. Click the **Activate** button.

Updating Parallels Compressor Workstation

Update procedure for Parallels Compressor Workstation consists of the following steps:

- 1 Getting know about a new update. We recommend that you visit the Downloads <http://www.parallels.com/en/download/> page of the Parallels web-site.
- 2 Downloading the Parallels Compressor update for the package you used for installation.
- 3 When download is completed, log in the host (primary) or in the guest operating system depending on where Parallels Compressor was installed originally. If it is the guest operating system, copy the downloaded file into your virtual machine.
- 4 For updating in the host operating system, disconnect the Parallels Compressor ISO file from all running virtual machines.
- 5 The installation of the update is similar to installation of the product itself. Follow the steps described by the appropriate topic.

Warning. Please do not upgrade any of versions of Parallels Compressor Server with Parallels Compressor Workstation (and vice versa). Parallels Compressor Server should be removed before you start installation of other edition of the program.

Uninstalling Parallels Compressor in Windows

Uninstallation of Parallels Compressor is performed in the same operating system where it was installed whether it is host (primary) operating system or guest operating system.

Note. You must have power user or administrator rights to uninstall the program in Windows operating systems.

To uninstall Parallels Compressor:

- 1 If the program was installed in the host (primary) operating system, disconnect the `ParallelsCompressor.iso` file from all running virtual machines.
- 2 Removing of Parallels Compressor can be performed in either of the following ways:
 - In the same operating system where Parallels Compressor was installed (guest or host), click **Start --> Control Panel --> Add / Remove Programs**. On the program list select Parallels Compressor and click **Remove**;
 - Locate the installation file (`Parallels-Cps-Wst-XXXX-Win.exe`). Click this file to start the wizard which will remove the installation.
- 3 Follow the steps of installation wizard.

The program will be uninstalled, and its folder (the default folder is `C:\Program Files\Parallels\Parallels Compressor`) will be removed.

Uninstalling Parallels Compressor in Linux

Uninstallation of Parallels Compressor is performed in the host (primary) operating system.

Note. To uninstall Parallels Compressor on a computer running Linux you need `root` privileges.

To uninstall Parallels Compressor:

1 Disconnect the `parallels_compressor.iso` file from all running virtual machines.

2 Run Terminal, enter the command

```
su
```

to gain `root` privileges. Enter the password to the `root` account when prompted.

3 If RPM packages are supported in your system, enter the command

```
rpm -e parallels-compressor
```

4 If DEB packages are supported in your system, enter the command

```
dpkg -r parallels-compressor
```

5 If both RPM and DEB are not supported in your system, go to the installation directory and run

```
./uninstall.sh
```

script.

6 To quit the `root` account enter the following command

```
exit
```

The program will be uninstalled, and its folder (default folder: `/usr/share/parallels-compressor/`) will be deleted.

CHAPTER 4

How to Run Parallels Compressor

The way you start Parallels Compressor depends on how it was installed: in host or in guest operating system.

Warning. The result of virtual machine compression is irreversible. Before you run the program please back up your virtual machine (by cloning it or by copying its hard disk files to a safe location) to have a chance to roll back in case you don't like the results of compression.

In This Chapter

When Installed in Host OS	24
When Installed in Guest OS.....	27
Parallels Compressor Wizard.....	29
Compression in Automatic Mode	35

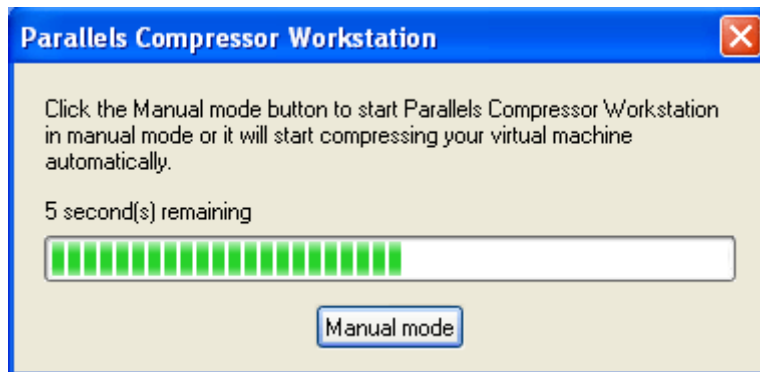
When Installed in Host OS

Note. To run Parallels Compressor in a virtual machine you should have administrator rights in the guest operating system. Log into the guest operating system as a user with administrator rights.

Use the Parallels Compressor ISO image file to run Parallels Compressor in your virtual machine as follows:

- 1 Locate the Parallels Compressor ISO file:
 - in **Windows** host OSes: `ParallelsCompressor.iso`,
default folder: `C:\Program Files\Parallels\Parallels Compressor`
 - in **Linux** host operating systems: `parallels_compressor.iso`,
default folder: `/usr/share/parallels-compressor/`
- 2 Connect this ISO image file to the virtual CD/DVD-ROM of the virtual machine which you want to compress. More detailed information is provided in the Connecting Parallels Compressor ISO Image File (see page 25) topic.

- 3 The program starts automatically. Once launched, Parallels Compressor displays the dialog box with a time indicator showing the time remaining until Parallels Compressor will run in the automatic mode.



You can let it run in automatic mode (see page 41) or choose the manual mode (see page 41) to customize the compression process. To start Compressor in manual mode click the **Manual mode** button.

- 4 If *automatic* mode is chosen, compression will be performed as described in the Compression in Automatic Mode (see page 35) topic.
- 5 If *manual* mode is chosen, the Parallels Compressor Wizard (see page 29) will guide you through the steps of compression process. More detailed information is given in the Parallels Compressor Wizard (see page 29) topic.

Connecting Parallels Compressor ISO Image File

For Parallels workstation

Check that your virtual machine meets the requirements provided by the Limitations for Virtual Machine Compression (see page 40) topic.

- 1 Start the Parallels Workstation and open a virtual machine you want to compress.
- 2 If your virtual machine does not have a CD/DVD-ROM drive in its configuration, edit the virtual machine configuration:
 - add a CD/DVD-ROM, select **Enabled**;
 - choose the **Use image file** option;
 - browse to the Parallels Compressor ISO file or specify the path to the file, click **OK**;
 - start the virtual machine.
- 3 If your virtual machine already has a CD/DVD-ROM in configuration:
 - start the virtual machine;
 - on the Parallels Workstation menu, select **Devices --> CD/DVD-ROM --> Connect Image**, or click the CD icon on the status bar and select **Connect Image**.
 - specify path to the ISO file.
- 4 Parallels Compressor starts automatically.

For VMware workstation

Check that your virtual machine meets the requirements provided by the Limitations for Virtual Machine Compression (see page 40) topic.

- 1 Run the VMware workstation. Open the virtual machine which you want to compress.
- 2 If your virtual machine does not have a CD/DVD-ROM drive in its configuration, edit the virtual machine configuration:
 - click the **Edit virtual machine settings** option;
 - connect a CD/DVD-ROM if it wasn't connected;
 - choose the **Use ISO image** option;
 - click **Browse** to locate the Parallels Compressor ISO file click **OK**;
 - start the virtual machine.
- 3 If your virtual machine already has a virtual CD/DVD-ROM connected:
 - start the virtual machine;
 - once fully logged in, on the workstation menu select **VM-->Settings-->CD/DVD-ROM**. Provide full path to the Parallels Compressor ISO file;
- 4 Parallels Compressor starts automatically. To switch to the manual mode press the **ESC** key or click the **Manual Mode** button.

For Microsoft Virtual PC

Check that the Virtual PC meets the requirements provided by the Limitations for Virtual Machine Compression (see page 40) topic.

- 1 Start the virtual machine you would like to compress.
- 2 Once fully logged in, on the Virtual PC menu, select the **CD** and select **Capture ISO**.
- 3 Browse to the Compressor ISO file and click **Open**.

For Microsoft Virtual Server

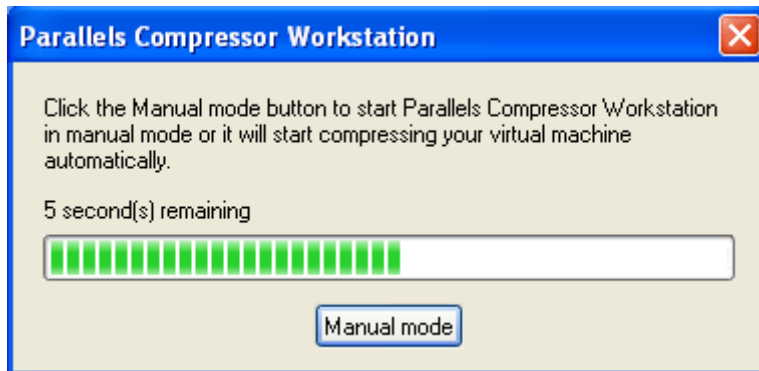
- 1 Open Microsoft Virtual Server **Master status** page.
- 2 Open virtual machine configuration table.
- 3 Click the **CD/DVD** link to edit its configuration.
- 4 Select the **Known Image File** option.
- 5 Type or paste full path to Parallels Compressor ISO file or **Browse** to this file.
- 6 Click **OK**.
- 7 Start Virtual PC. When logged in, double-click the **CD/DVD-ROM**.
- 8 Parallels Compressor starts automatically.

When Installed in Guest OS

Note. To run Parallels Compressor in a virtual machine you should have administrator rights in the guest operating system. Before you start the program log in as a user with administrator rights.

If you installed Parallels Compressor in a virtual machine (guest operating system) you can easily run it whenever you need to compress your virtual machines.

- 1 To launch the program perform one of the actions below:
 - Click Start --> Programs -->Parallels -->Parallels Compressor
 - Click the `ParallelsCompressor.exe` file located in the default program folder: `C:\Program Files\ Parallels\ Parallels Compressor` or in the folder specified during installation;
 - Click the Parallels Compressor icon on the Quick Launch menu;
 - The program can also be launched using the command line mode. For details, please refer to Command Line Keys for Parallels Compressor (see page 28) topic
- 2 Once launched, Parallels Compressor displays the dialog box with a time indicator showing the time remaining until Parallels Compressor will run in automatic mode.



You can let it run in automatic mode (see page 41) or choose manual mode (see page 41) to customize the compression process. To start Compressor in manual mode click the **Manual mode** button.

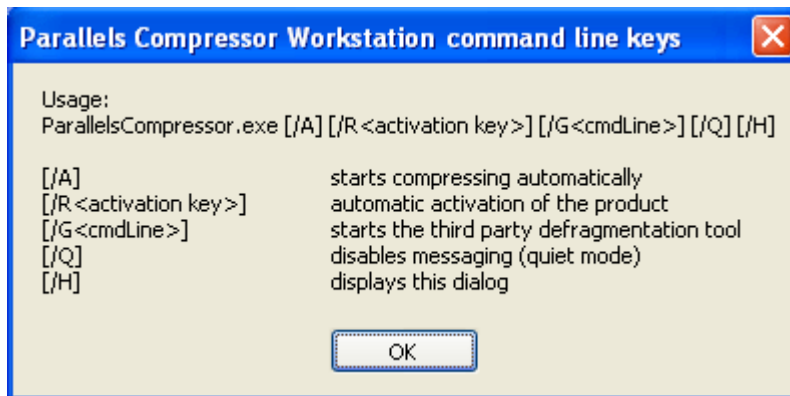
- 3 If the automatic mode is chosen, Parallels Compressor will run automatically in Express (see page 42) compression mode.
- 4 If the manual mode is chosen, the Parallels Compressor Wizard (see page 29) will guide you through the steps of compression process.

Command Line Keys for Parallels Compressor

Parallels Compressor, installed in a guest operating system can be run from the command line.

The current version of Parallels Compressor has the following keys:

- `/A` - to start program in the automatic running mode, without prompting user to confirm operations;
- `/R <activation key>` - to register or activate the program whether it is an initial activation or activation during the trial period or when trial period has been expired. `<activation key>` stands for the 25-symbol activation key itself, typed without spaces, The error codes are as follows:
 - 0 - OK, the activation was completed successfully
 - 1 - activation key is expired
 - 15 - activation key is invalid
 - 255 - unknown error
- `/Q` - to disable messaging ("quiet mode");
- `/G <cmdline>` - to start third party defragmentation tool instead of the tool used by Parallels Compressor, `<cmdline>` stands for path and name of such tool ;
- `/H` - to open help panel with the list of available keys as below:



To run Parallels Compressor with keys follow the steps below:

- 1 Click **Start --> Run** to open command line (cmd program).
- 2 Change directory to **Program files-->Parallels-->Parallels Compressor**.
- 3 Enter, for example, the command:

```
ParallelsCompressor /A
```

to activate the product.

Comments to command line format

- The program name and key are separated by a space.
- If spaces are used in the <activation key> or in <cmdline>, enclose the expression in double quotes as follows:

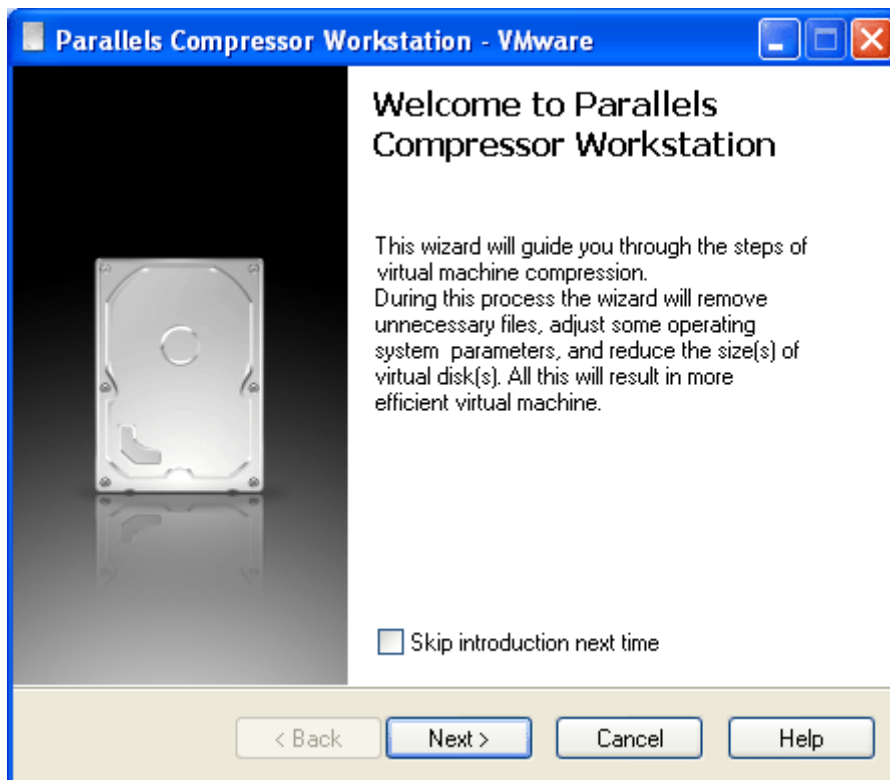
```
ParallelsCompressor /G"C:\Program Files\...\defrag.exe"
```

There is no space between the key and its parameter, as above.

Parallels Compressor Wizard

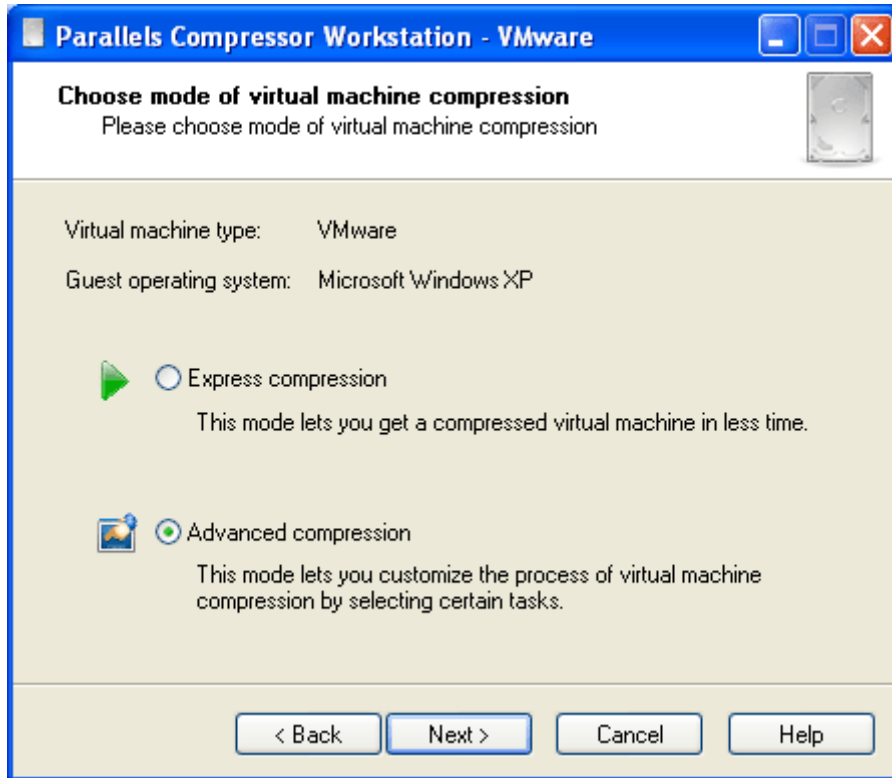
Parallels Compressor is implemented as a wizard, and it will guide you through the steps of the virtual machine compression process.

- 1 The wizard starts and displays the Welcome screen.



If you'd like to skip the Welcome screen next time you run the wizard, select the Skip introduction next time check box. Click Next to continue.

- 2 Choose mode of virtual machine compression. At this step, wizard detects the type of your virtual machine and the type of guest operating system installed. Wizard prompts you to choose between **Express** compression (see page 42) and **Advanced** compression (see page 42).

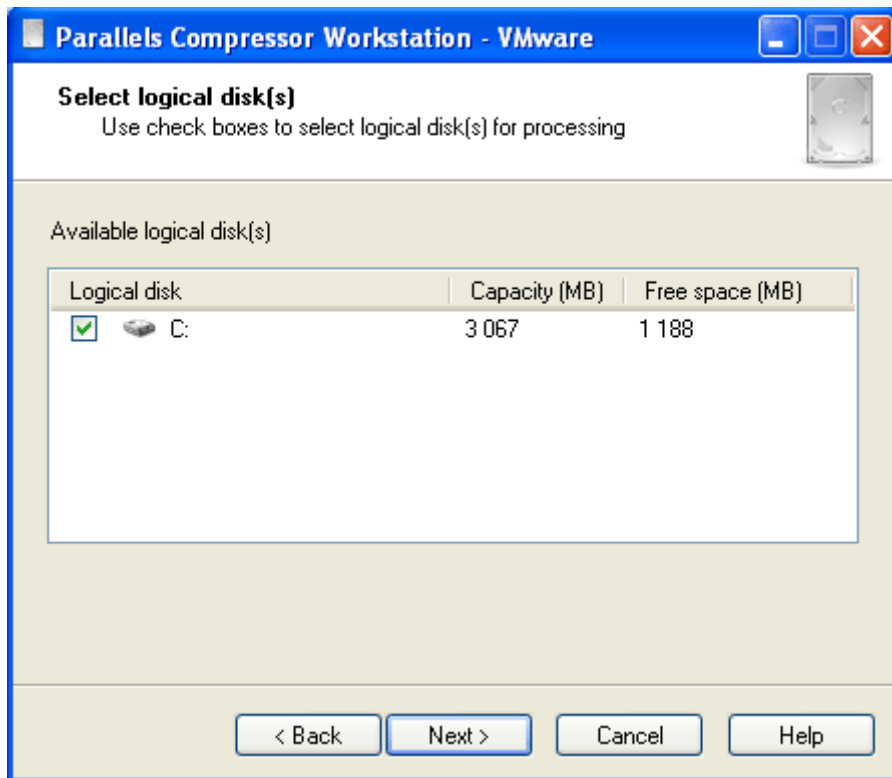


If you choose the **Express** compression mode, the wizard will use the default options specific for the type of virtual machine and guest operating system.

If you choose the **Advanced** compression mode, you will be able to select certain options of this process.

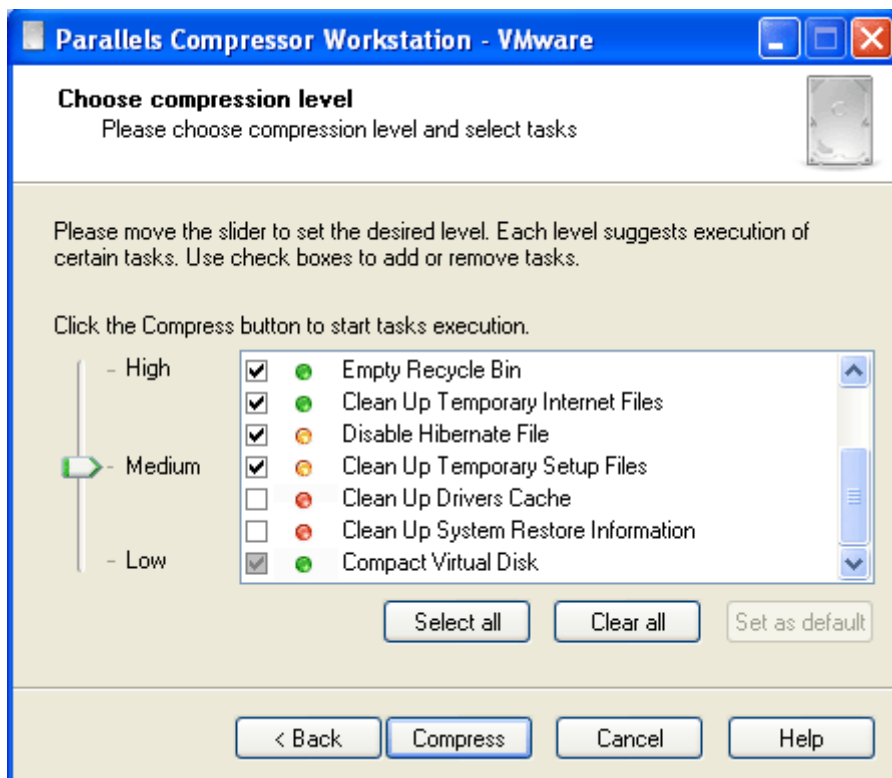
- 3 **Select Logical Disk(s)**. Wizard determines what hard disks are available in your virtual machine. Compacting or shrinking of real disks is not supported, and such disks will not appear on the list. Please read the **Limitations for Virtual Machine Compression** (see page 40) topic if you are not sure what disk formats are supported.

Use check boxes to select disk or disks.



Click Next. If you have selected the Express compression mode on the Step 3 then see Step 6.

4 Choose Compression Level.



The wizard prompts you to choose the Compression level (see page 43). There are three levels: *High*, *Medium*, *Low*.

To choose the level, place the cursor over the level slider and smoothly move slider to the desired level or just click levels consecutively starting from High until the slider reaches the desired level.

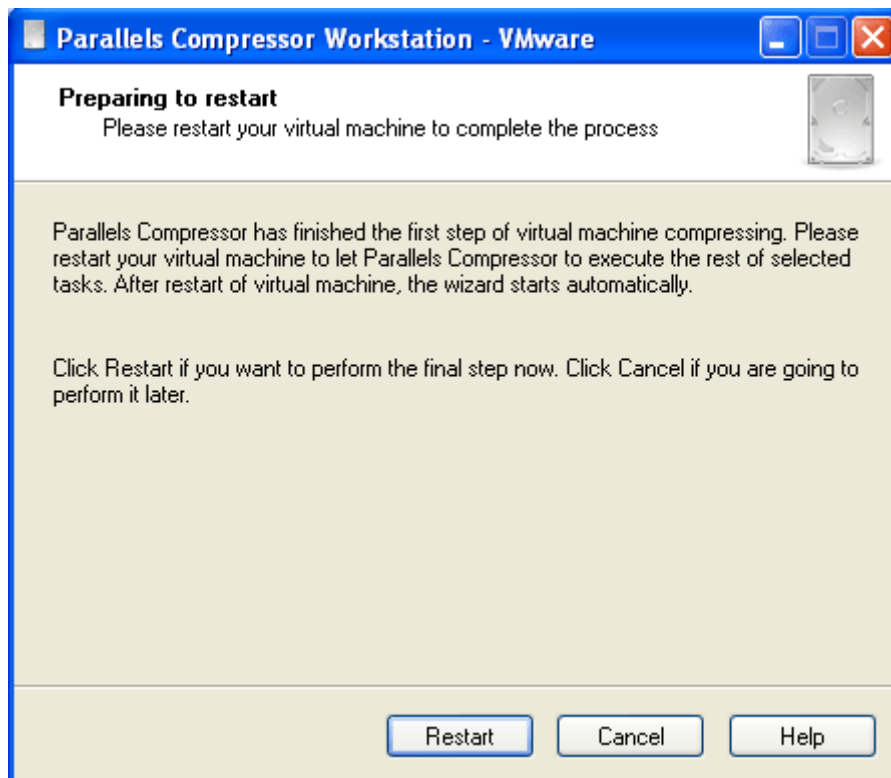
Each level suggests that certain tasks (see page 43) will be executed. Additionally, you can select check boxes for tasks you want to be executed and clear the check boxes for tasks you don't want to be executed. You also can click the **Select all** button to select all tasks or click **Clear all** to clear all check boxes. Click **Set as default** to restore the selection of tasks default for the chosen level.

The check box for the **Compact virtual disk** task is always disabled. This task is executed at each level for all virtual machines except Virtual PC.

Click the **Compress** button. Wizard starts executing the selected tasks, and you can see the progress of operation.

If you cleared the check box for the **Truncate page file** option, wizard skips Step 5 and Step 6.

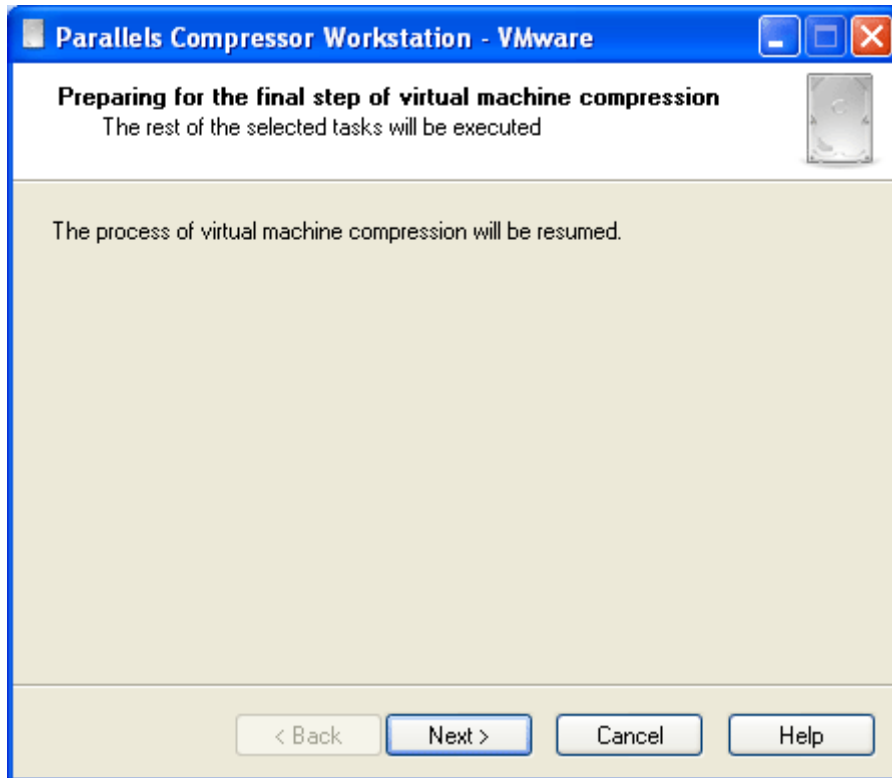
- 5 **Preparing to restart.** Depending on tasks you have selected on the previous step, wizard may require restarting of the computer .



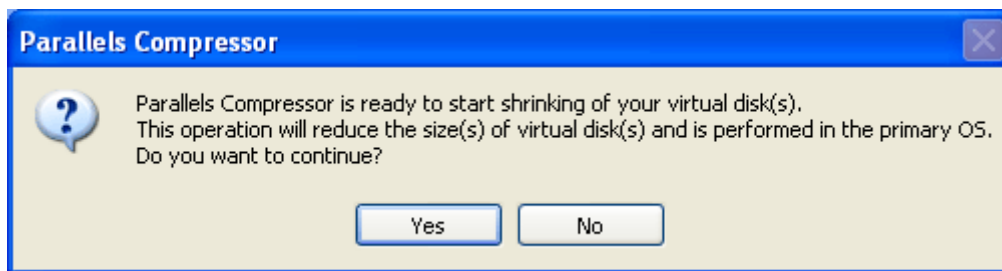
Click **Next** to restart your virtual machine.

If you click **Cancel** the the process of virtual machine compressing will be resumed automatically at the next restart of your virtual machine.

- 6 After restart is completed, wizard is ready to resume the execution of tasks. Click Next.



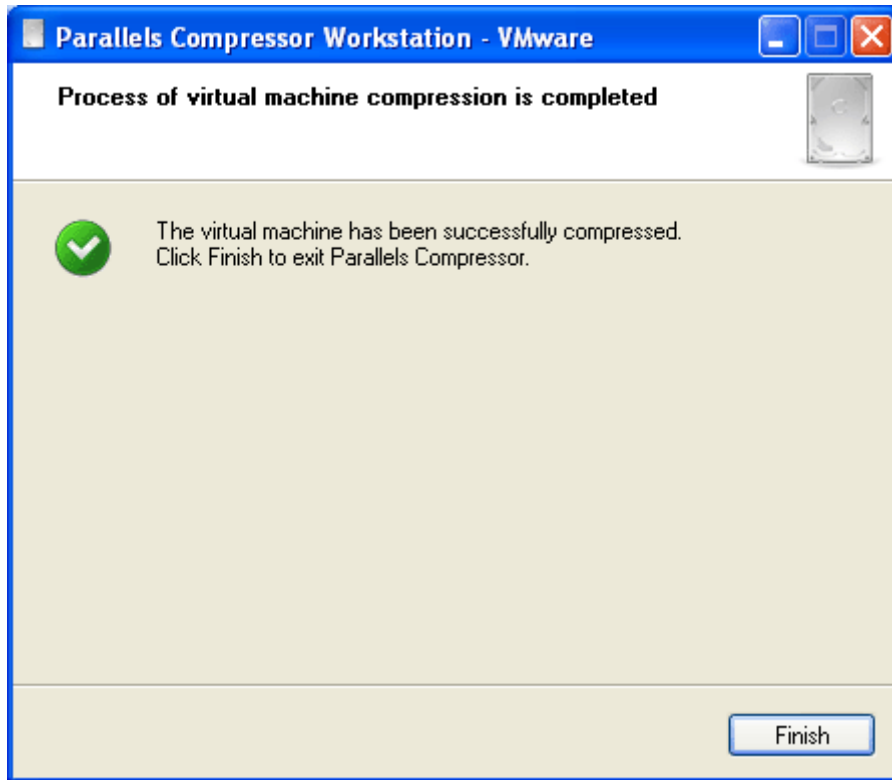
- 7 On the next wizard's dialog box, you can see the progress of operations. If you have chosen the **Express** compression, the wizard performs the disk compacting without prompting user to confirm this operation.
- 8 Compacting (shrinking for VMware machines) of the virtual disks is the final step of compression.



Click **Yes** to finalize the operation. Click **No** to skip compacting of disk(s).

In some cases the compacting of virtual disks will not be performed, for example, when a selected disk is in plain format or not a system disk. For more information please refer to the [Limitations for Virtual Machine Compression](#) (see page 40) topic.

9 Compression of virtual machine is completed.



Now, your virtual machine's hard disks are compressed and significantly reduced in size.

Thank you for choosing Parallels Compressor Workstation!

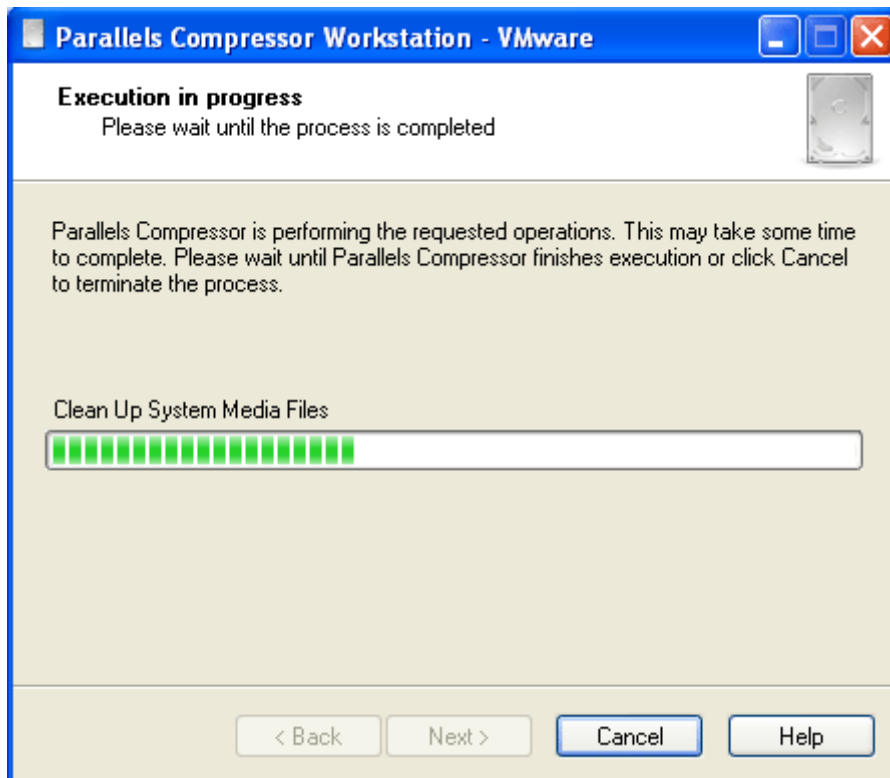
Compression in Automatic Mode

In *automatic* mode Parallels Compressor uses the following default options:

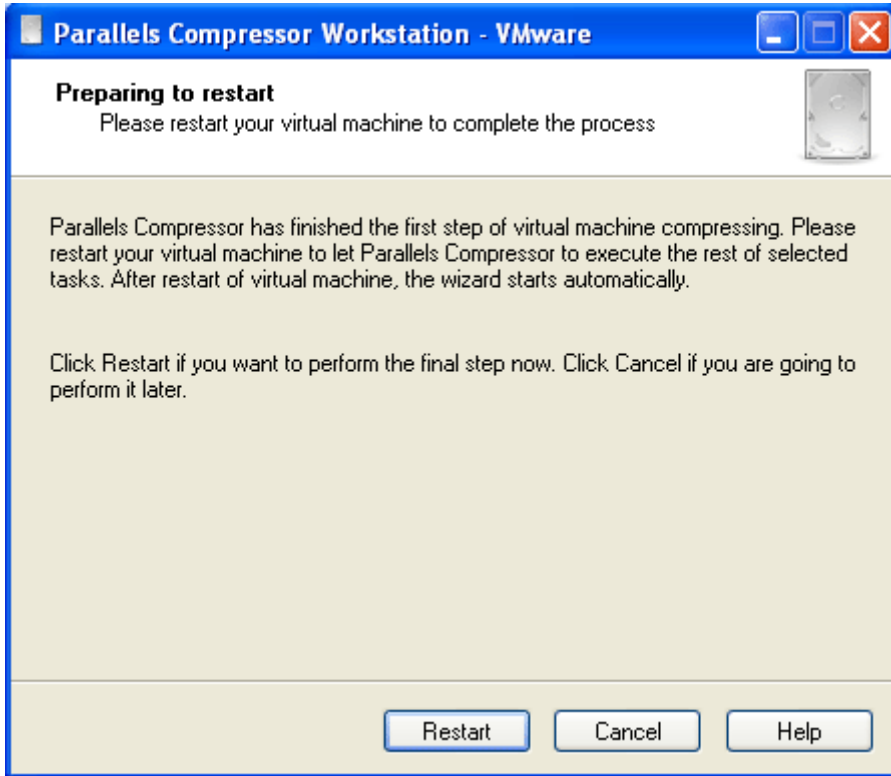
- only one virtual system disk is being processed (if virtual machine has several system disks, the one which is currently loaded);
- compression is performed at the High compression level, all compression tasks will be executed, except for Clean up Drivers Cashe, which will be skipped.

Note. During its work, Parallels Compressor displays several dialog boxes. Although they are used for information purposes, you can click **Cancel** any time to stop Parallels Compressor or click the **Help** button to get necessary information.

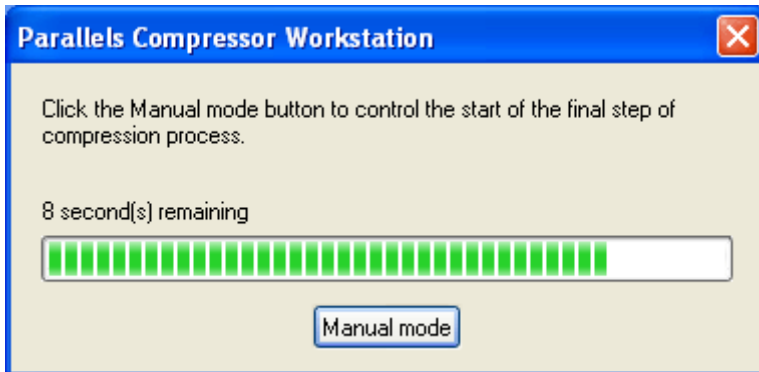
- 1 Parallels Compressor displays the Execution in progress dialog box that informs what tasks are being executed.



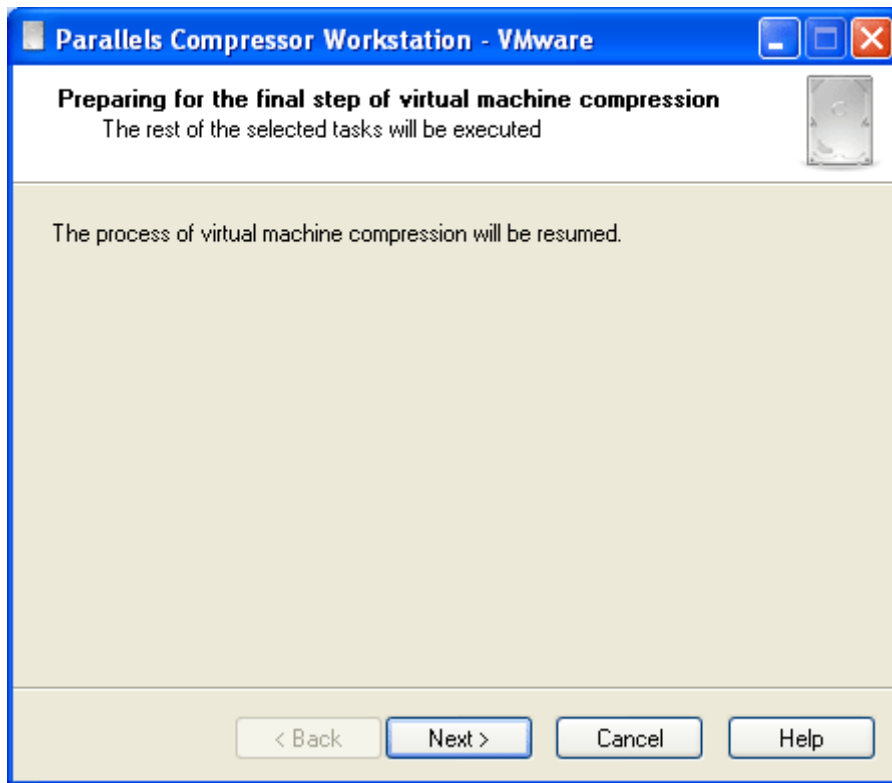
- 2 The next screen informs that Parallels Compressor is going to restart the virtual machine.



- 3 Then Parallels Compressor restarts the virtual machine.
- 4 After restart, it displays the dialog box with time indicator which shows time remaining until Parallels Compressor will continue the execution of compression tasks.

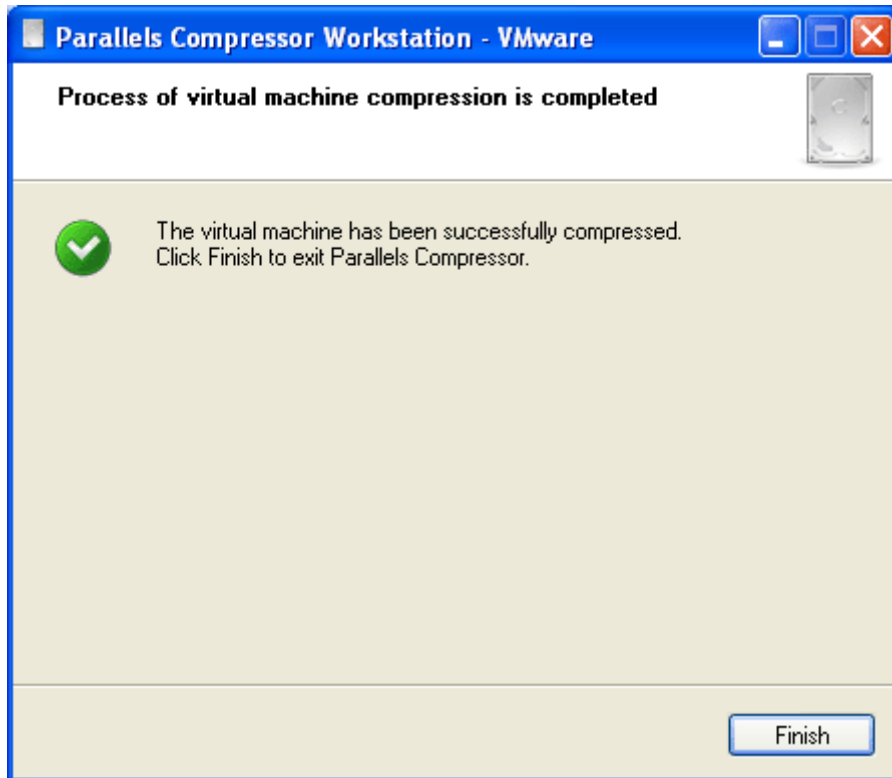


If you click the **Manual mode** button before timeout expires, you can postpone the execution of remaining tasks. In this case you will see the dialog box as below. Click **Next** any time to let Parallels Compressor continue the compression.



- 5 When Parallels Compressor resumes the execution of compression tasks (after restart of virtual machine), it informs about tasks being executed on the Execution in progress dialog box.

- 6 When Parallels Compressor finishes its work, you can see the following screen.



Click Finish to exit Parallels Compressor.

CHAPTER 5

Options of Compressing

This Chapter describes in detail all options of Parallels Compressor Server available in manual mode.

In This Chapter

Limitations of Virtual Machine Compression.....	40
Running Modes	41
Express and Advanced Modes	42
Compression Levels.....	43
Further Reducing the Disk Size	44

Limitations of Virtual Machine Compression

Parallels Compressor processes a virtual machine in the following way:

- On the current (booted from) system disk deletes unnecessary files;
- Defragments virtual expanding and plain disks and cleans up unused space;
- Compacts expanding disks (not only the system expanding disk). The reducing of the size of virtual disk file is performed in the host operating system.

In *automatic* mode compresses only one current system disk (if disk is plain, it will not be compacted)

Virtual machines of different virtual platforms have a variety of virtual disk formats and running modes. The operation of compressing has a number of limitations for certain disk formats and modes.

Limitations for expanding disks

Most effective compression is performed on virtual system disks in expanding format for virtual machines from VMware (only in persistent mode) and Parallels.

Non-system and not current system (in multi-booting machine) expanding disks are usually compressed in less extent.

Note. For Microsoft Virtual PC, the compacting operation for Virtual PC disks should be done by means of Virtual Disk Wizard.

Limitations for plain (fixed) disks

Parallels Compressor performs only disk cleaning and defragmenting for virtual disks in plain format; disk compacting can not be done for plain disks.

Physical disks

Parallels Compressor does not support any operations on physical disks connected to virtual machines.

Limitations for VMware virtual machines

Parallels Compressor doesn't support compressing for the following objects:

- linked clone (or parent in a template mode)
- virtual machine with snapshots
- expanding disks in non-persistent mode (changes are not immediately written to a virtual hard disk)

Limitations for Microsoft Virtual PC

Parallels Compressor doesn't support disk compacting for all disk objects.

Disk cleaning is not supported for the following objects:

- undo disks (changes are not immediately written to a virtual hard disk)
- differencing disks

Running Modes

Parallel Compressor can be run in *manual* and *automatic* running modes.

Automatic mode

The automatic mode is the default mode. It is available each time you start Parallels Compressor, no matter where it is installed, in the guest or host (primary) operating system.

Once launched, Parallels Compressor displays the dialog box with a time indicator showing the time remaining until Parallels Compressor will run in automatic mode. If the **Manual mode** button was not clicked to stop the time indicator, Parallels Compressor will run in automatic mode.

If the program was installed in a virtual machine it also can be launched in automatic mode in the following way:

- 1 Click **Start --> Run** to open command line (cmd program).
- 2 Change directory to **Program files-->Parallels-->Parallels Compressor**.
- 3 Enter the command:

```
ParallelsCompressor /A
```

- 4 Program starts. Parallels Compressor displays the dialog box with a time indicator showing the time remaining until Parallels Compressor will run in the automatic mode.

Note. Other command line keys are described in the **Command Line Keys for Parallels Compressor** (see page 28) topic.

In automatic mode, Parallels Compressor will perform the Express Compression (see page 42) without prompting user to confirm most of operations. To run it in the quiet mode (without any messages) use the **/Q** key.

Manual mode

This mode is available for both types of installation. To launch the Parallels Compressor in manual mode do the following:

- 1 If Parallels Compressor is installed in guest operating system, click **Start --> Programs-->Parallels -->Parallels Compressor**.

- 2 If Parallel Compressor is installed in host (primary) operating system, connect Parallels Compressor ISO file to virtual CD/DVD-ROM, start your virtual machine. Or, if the virtual machine is already running, connect the ISO file to a virtual CD / DVD-ROM "on the fly".
- 3 Program starts and displays the time indicator. Press the **ESC** key or click the **Manual Mode** button to switch to manual mode.
- 4 The Parallels Compressor Wizard will guide you through the steps of the compression process.

Express and Advanced Modes












When launched in manual mode, Parallels Compressor offers to choose the mode in which virtual machine will be processed:

- **Express** compression. Recommended for all users. Compressor uses the default options for the process. By default, it performs compression at the high (see page 43) level and performs all compression tasks except for **Clean up Drivers Cashe**, which is skipped. Only one, system disk is being processed during the Express Compression.
- **Advanced** compression. Recommended for advanced users only. When user chooses the **Advanced** compression, the wizard lets user select options: select logical disks, choose the desired compression level and select whether to execute certain tasks for the chosen level or not.







Compression Levels

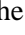


Parallels Compressor supports three levels of compression: *Low*, *Medium*, *High*. Each level suggests the execution of certain tasks. The wizard (see page 29) displays the complete list of such tasks.

The complete list includes the following tasks:

-  Truncate Page file (recreates the system page file of smaller size);
-  Clean Up Temporary System Files (deletes temporary files used by system for acceleration of operations);
-  Clean Up System Cache (temporary data stored by system on disk to increase performance);
-  Empty Recycle Bin (permanently removes previously deleted files from the Recycle Bin);
-  Clean Up Temporary Internet Files (cleans up the Internet Explorer cache, deletes cookies, history, address bar, temporary files);
-  Disable Hibernate file (disables hibernate file which stores the virtual machine memory when the virtual machine is turned off);
-  Compact virtual disk(s) (reduces the size of disk in host (primary) operating system);
-  Clean Up Temporary Setup Files (deletes installation files used by MS Office and other programs);
-  Clean Up System Media Files (deletes temporary files used by Media Player);
-  Clean up Drivers Cache (empties the cache for most popular drivers, clear this check box if you are going to install new hardware);
-  Clean Up System Restore Information (deletes data related to the last successful system loading).

By default, tasks are assigned to the compression level in the following way:

- **High level:** all tasks on the list (those marked by , , ) are suggested for execution
- **Medium level:** all tasks marked by  and 
- **Low level:** only tasks marked by 

The desired level of compression can be chosen with the help of a slider which has three positions: *Low*, *Medium*, *High*. For each task on the list there is a check box. When the slider is at the *High* position all tasks are selected. Moving the slider from *High* to *Medium* position, clears check boxes for tasks marked by ; moving the slider to the *Low* position clears check boxes for tasks marked by  and leaves as selected only those tasks which are suggested for execution at the *Low* level (.

Additionally, with any level chosen, you can add/remove tasks by selecting or clearing corresponding check boxes. To restore the selection of tasks default for the chosen level, click the **Set as default** button.

Note. The check box for task: **Compact virtual disk(s)** - cannot be cleared; this task is mandatory for each level. For Virtual PC the check box for this task is cleared.

If the Express compression (see page 42) mode is selected (or in automatic mode) all tasks are executed as suggested by the *High* level, only the **Clean up Drivers Cashe**.tasks is skipped.

The Advanced compression (see page 42) allows users to select any set of tasks.

Further Reducing the Disk Size

After you have run the Parallels Compressor you can further reduce the disk size.

If you are going to share the virtual machine files with other users, then the smaller are its disks - the better. Once Parallels Compressor has completed its work, turn off virtual machine. Running virtual machine after compression has been completed will increase its system disk file (system page file is increasing as virtual machine is running). As the virtual hard disk is just a file on your computer, you can archive it with WinZip or WinRAR, whatever you prefer. The size can be reduced for up to 50%.

Index

A

- About Parallels Compressor Workstation • 6
- About This Guide • 4
- Activating in Guest Windows OS • 20
- Activating in Host Linux OS • 19
- Activating in Host Windows OS • 18
- Activating Parallels Compressor • 16
- Activation key • 17
 - permanent key • 8, 16, 17
 - temporary key • 8, 9, 17, 18
- Activation utility • 16
 - CpsLicense.exe • 12, 18
 - register • 13, 19

B

- Benefits of Using Parallels Compressor • 7

C

- Command Line Keys for Parallels Compressor • 28
- Command-line keys • 28
- Compacting disk • 9, 29, 40
- Compression • 7, 29, 40, 42, 43
 - advanced optimization • 41, 42
 - automatic • 27, 41, 42
 - default level • 29, 41, 42
 - Express optimization • 41, 42
 - level • 7, 29, 42, 43
 - manual • 29, 41, 42
 - mode • 29, 42, 43
 - tasks • 29, 43
- Compression in Automatic Mode • 35
- Compression Levels • 43
- Connecting Parallels Compressor ISO Image File • 25

D

- Document Conventions • 4
- Downloading the Parallels Compressor • 11

E

- Editions of Parallels Compressor • 6
- Expanding disk • 7, 29, 44
 - compacting • 40
- expanding format • 6, 7, 29, 40, 44

- Express and Advanced Modes • 42

F

- Further Reducing the Disk Size • 44

G

- Getting an Activation Key • 17

H

- Hard disk
 - physical disk • 40
 - real disk • 40
 - virtual disk • 7, 39, 43, 44
- How to Run Parallels Compressor • 24

I

- Installing in Host Linux OS • 13
- Installing in Host Windows OS • 12
- Installing Parallels Compressor • 9
- Installing Parallels Compressor in Guest OS • 15
- Installing Parallels Compressor in Host OS • 12
- Introduction • 6
- ISO image file • 22, 23, 25, 29

L

- Limitations of Virtual Machine Compression • 40

M

- Mode
 - compression mode • 29, 42
 - running mode • 41, 42

O

- operating system • 10, 11, 12, 13
 - guest • 6, 7, 11, 15, 22, 29
 - host • 7, 10, 11, 12, 13, 22, 23, 29, 41
- Options of Compressing • 39

P

- Parallels • 8, 11

- downloads page • 8, 11
- web-site • 8
- workstation • 9
- Parallels Compressor Wizard • 29
- Parallels VM Compressor • 6, 7, 11, 40
 - command line keys • 20, 28, 41
 - editions • 6
 - ISO image file • 23, 25
 - running • 7, 29, 40
 - updates • 22
 - updating • 22
- Plain disk • 40
- plain format • 7, 29, 40
- Preface • 4

R

- Requirements for Guest Operating Systems • 11
- Requirements for Host (Primary) Operating System • 10
- Running mode • 41
 - automatic • 28, 41, 42, 43
 - manual • 40, 41, 42, 43
 - quiet mode • 28
- Running Modes • 41

S

- size of virtual hard disk • 29, 44
 - reducing • 29, 43, 44
- Supported Virtual Platforms • 9
- System Requirements • 9

T

- Terms of Use • 8

U

- Uninstalling Parallels Compressor in Linux • 23
- Uninstalling Parallels Compressor in Windows • 22
- Updating Parallels Compressor Workstation • 22

V

- virtual machine • 6, 7, 9, 11, 29, 44
 - platforms supported • 6, 9
- Virtual hard disk
 - image file • 12, 25
 - plain format • 7, 40

W

- When Installed in Guest OS • 27
- When Installed in Host OS • 24
- Who Should Read This Guide • 4